

Fostering a Culture of Evidence and Inquiry

Rob Johnstone

Dean, Planning and Research | Skyline College
Project Director | The BRIC Initiative

Priyadarshini Chaplot

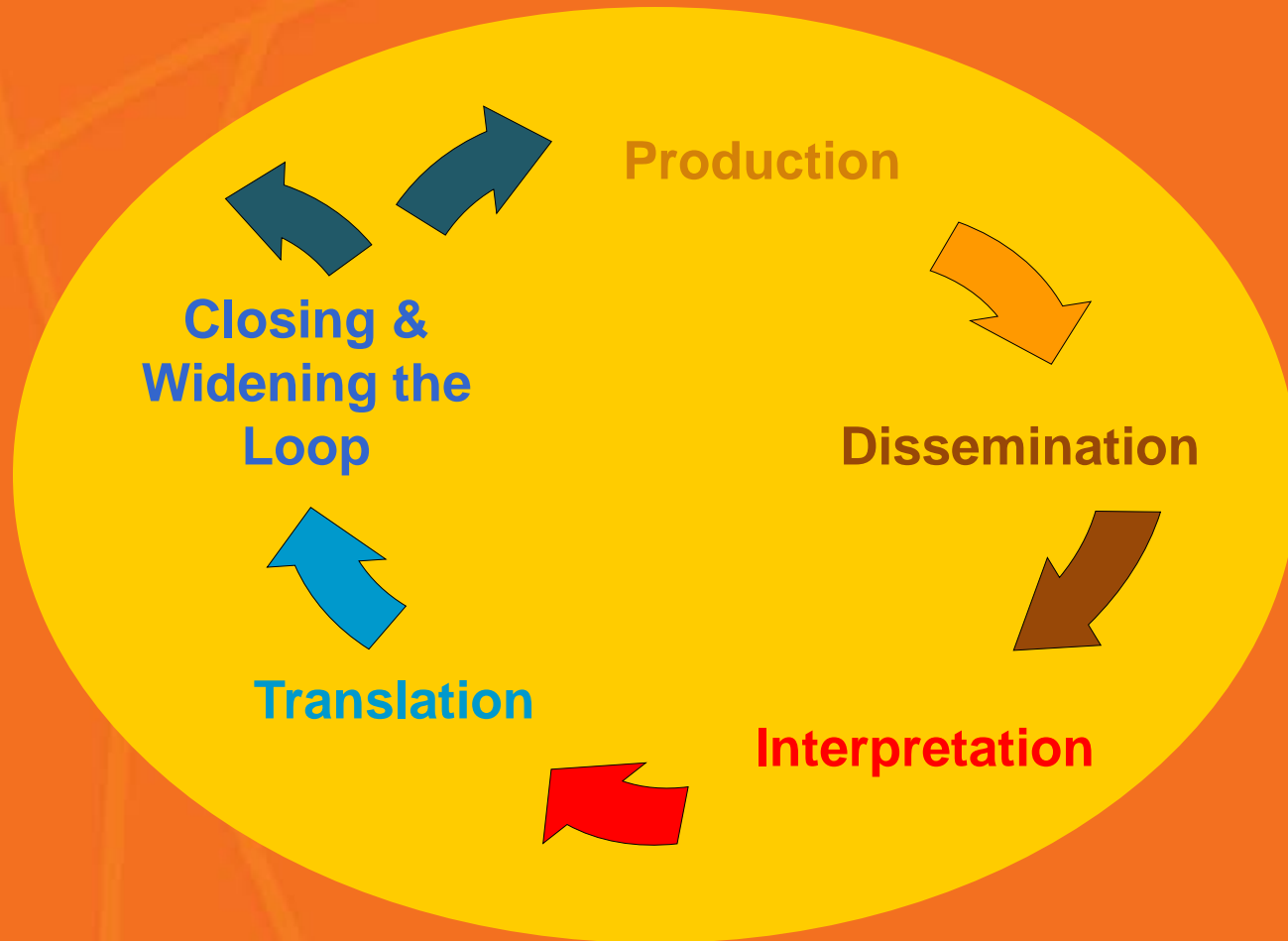
Project Coordinator | The BRIC Initiative

Sponsored by the William & Flora Hewlett Foundation
Research conducted by The RP Group

Agenda

- Opening Dialog: The Expanded Definition of Research
- Identifying Challenges through BSOC
- Identifying Responses through BRIC
- Closing Dialog: Strategies to Build Cultures of Evidence and Inquiry

Opening Dialog



BSOC Finding

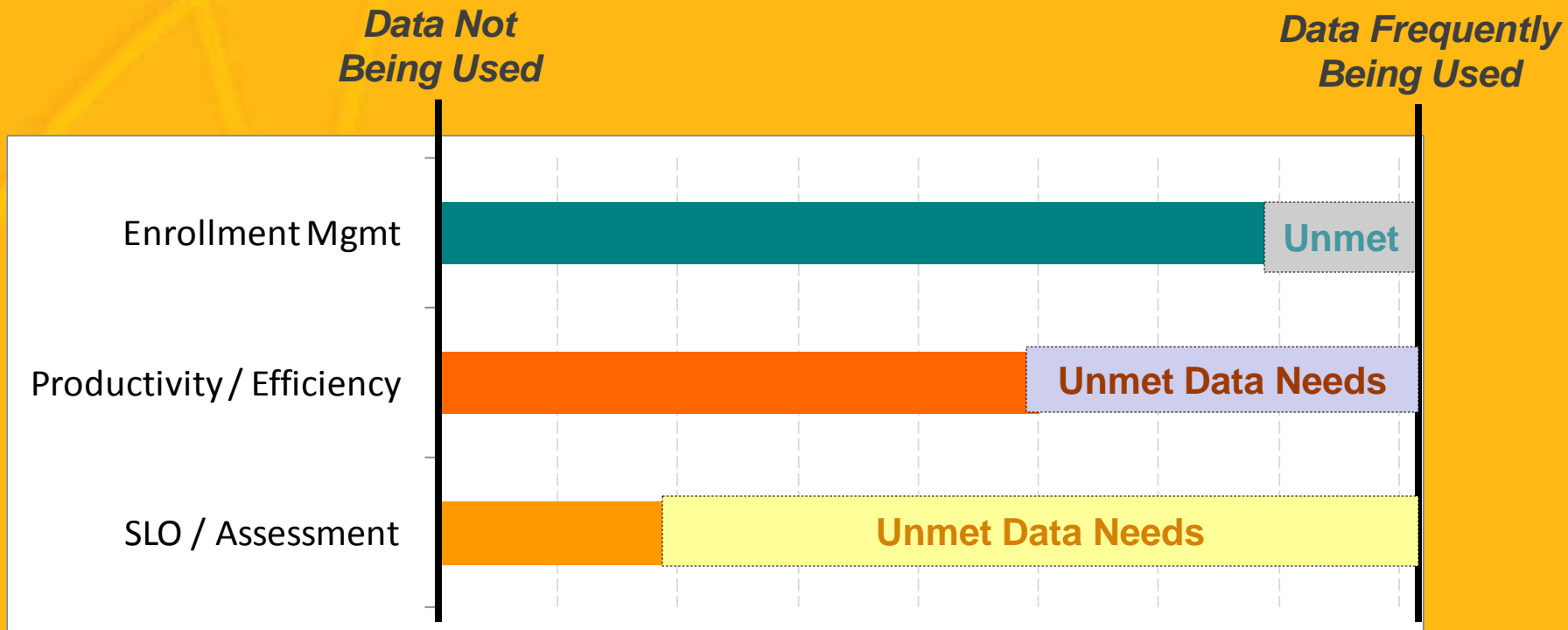
There is a **perception gap** between administrators and faculty regarding the availability and use of assessment data.

College **administrators believe** that **information is more widely available** and integrated into implementation planning than those who work more closely with students.

BSOC Finding

Colleges are data rich
and information poor.

The Data We Collect



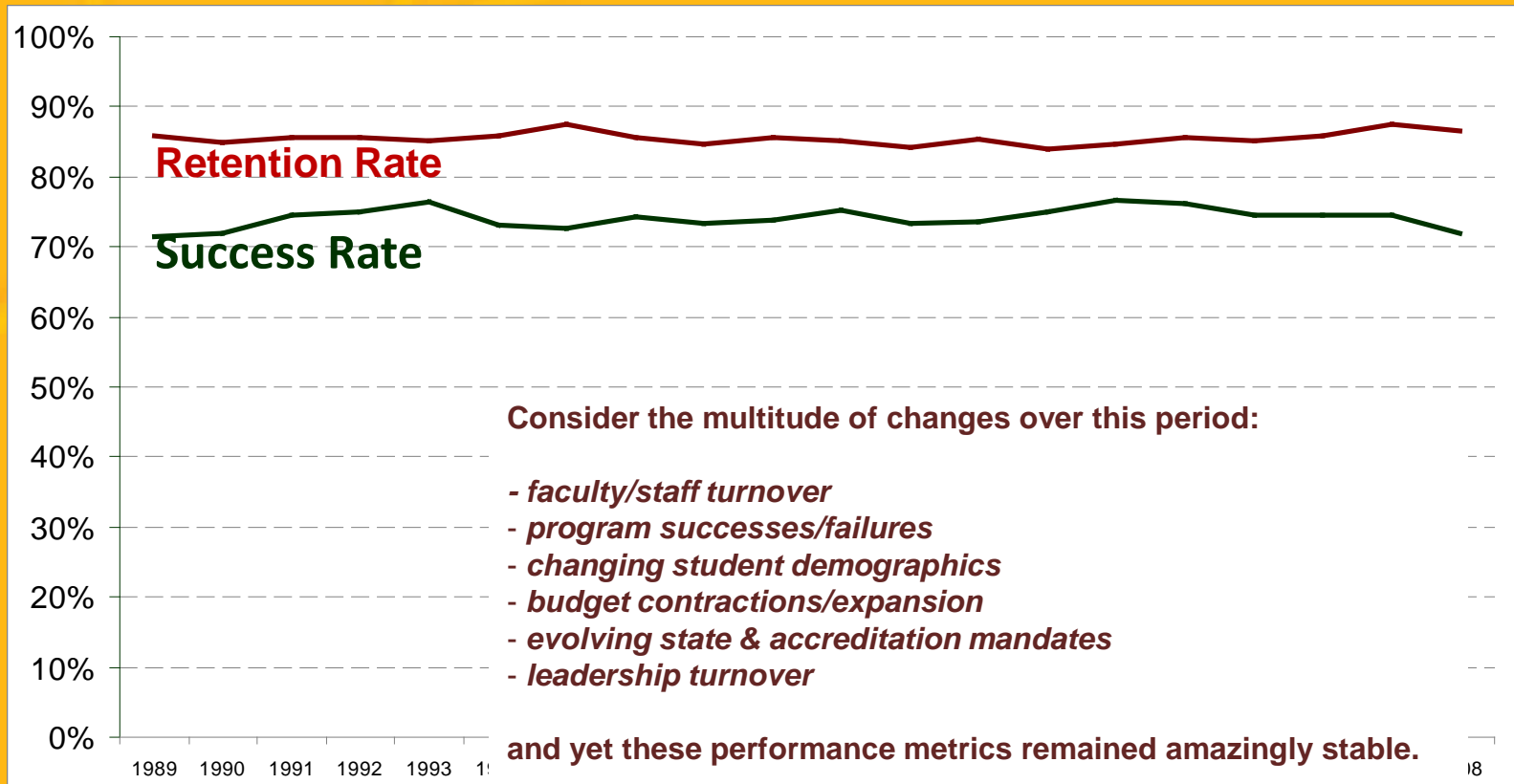
The Action Gap

“Our college is quite successful at gathering data and putting reports together based on that data. **Where we struggle is with executing action plans as a result of this data.** I don’t really think we do a good job of ‘doing’ anything with the data, or implementing programmatic changes or initiatives based on the data.”

BSOC Finding

Colleges may be focusing
on the wrong data.

Typical Twenty Year Trend for Common Institutional Outcome Measures



What does this tell us about the usefulness of these metrics in setting institutional strategies?

BSOC Finding

Institutional research supports institutional metrics to a higher degree than classroom assessment.

Level of Involvement in the Use of Data

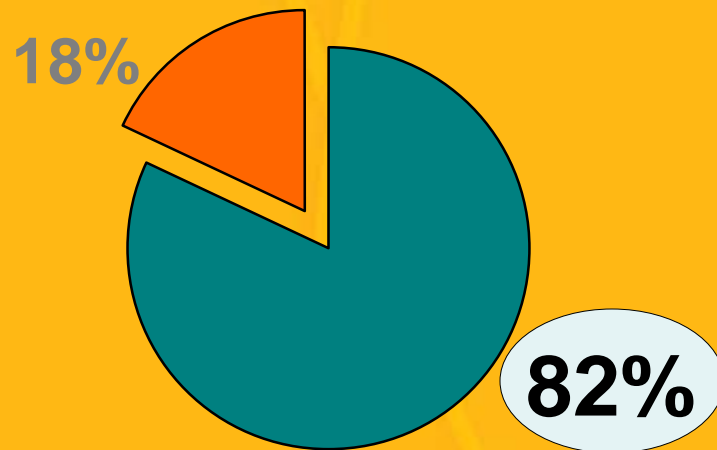


High Level of Involvement

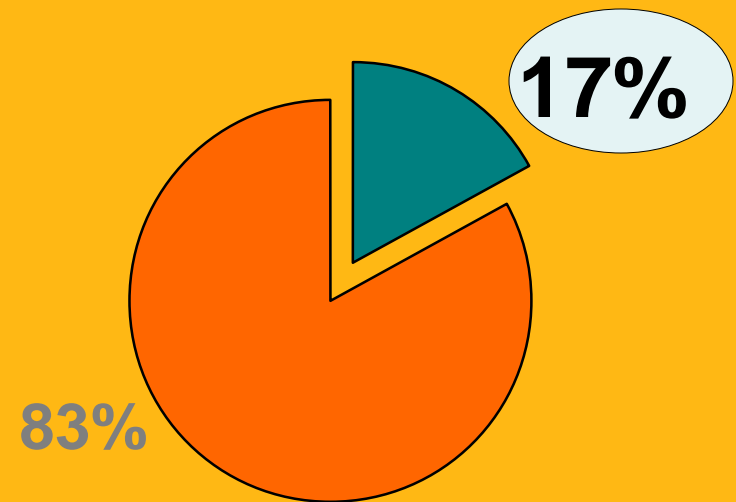


Low Level or No Involvement

Chief Instructional Officer



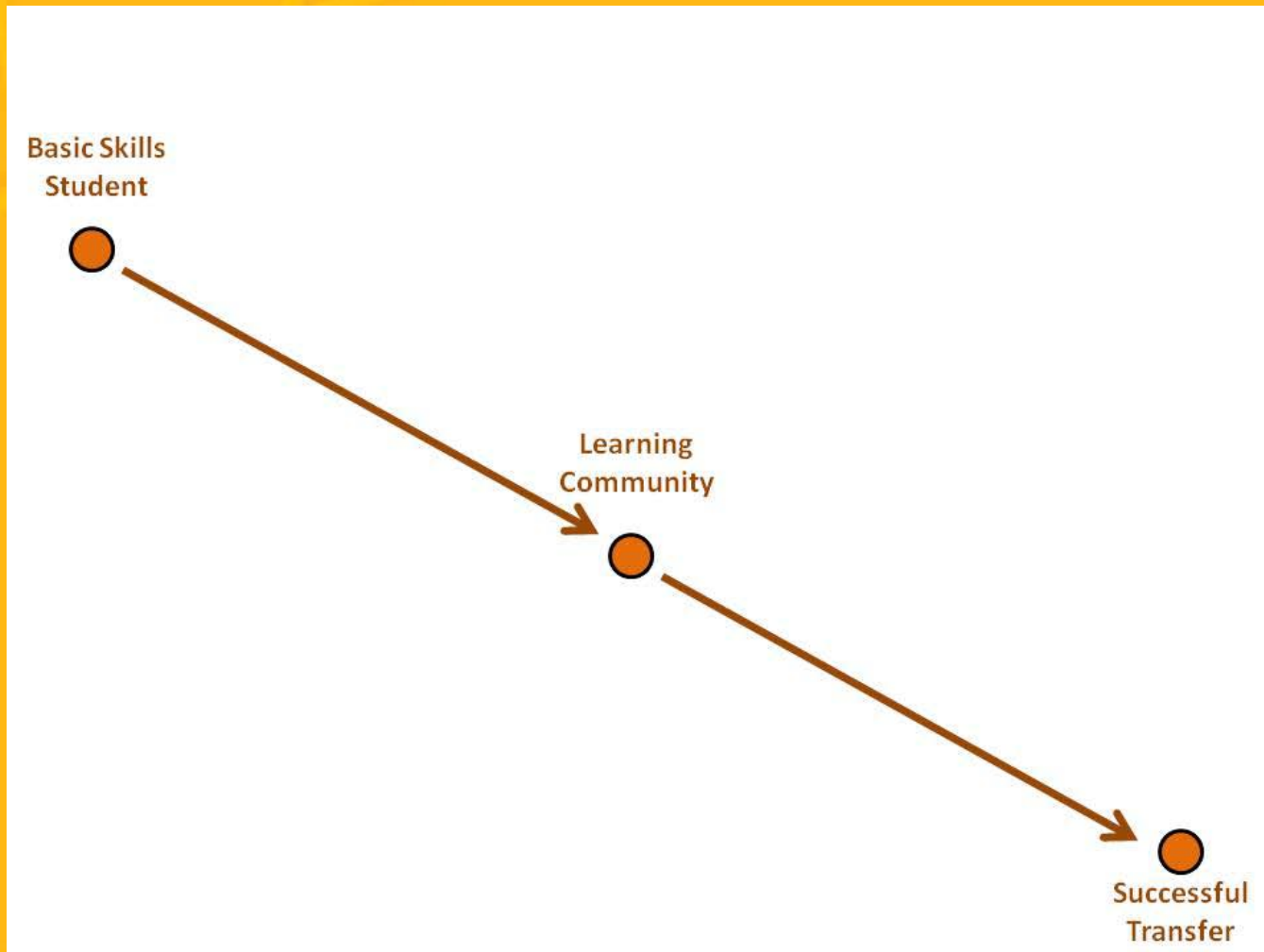
Classroom Faculty



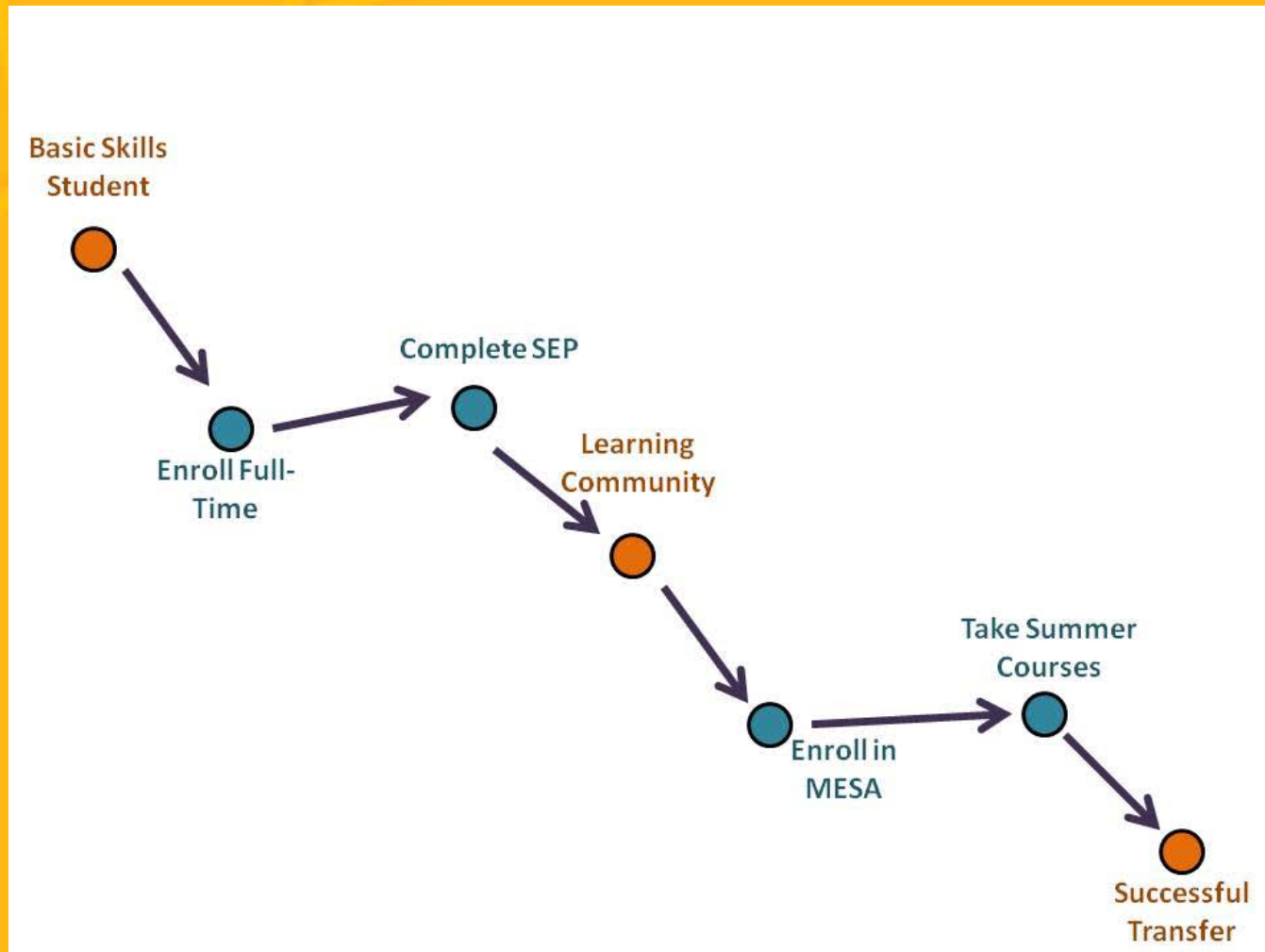
BSOC Finding

Much of what is needed to support good decision making lies beyond the current grasp of our institutional databases.

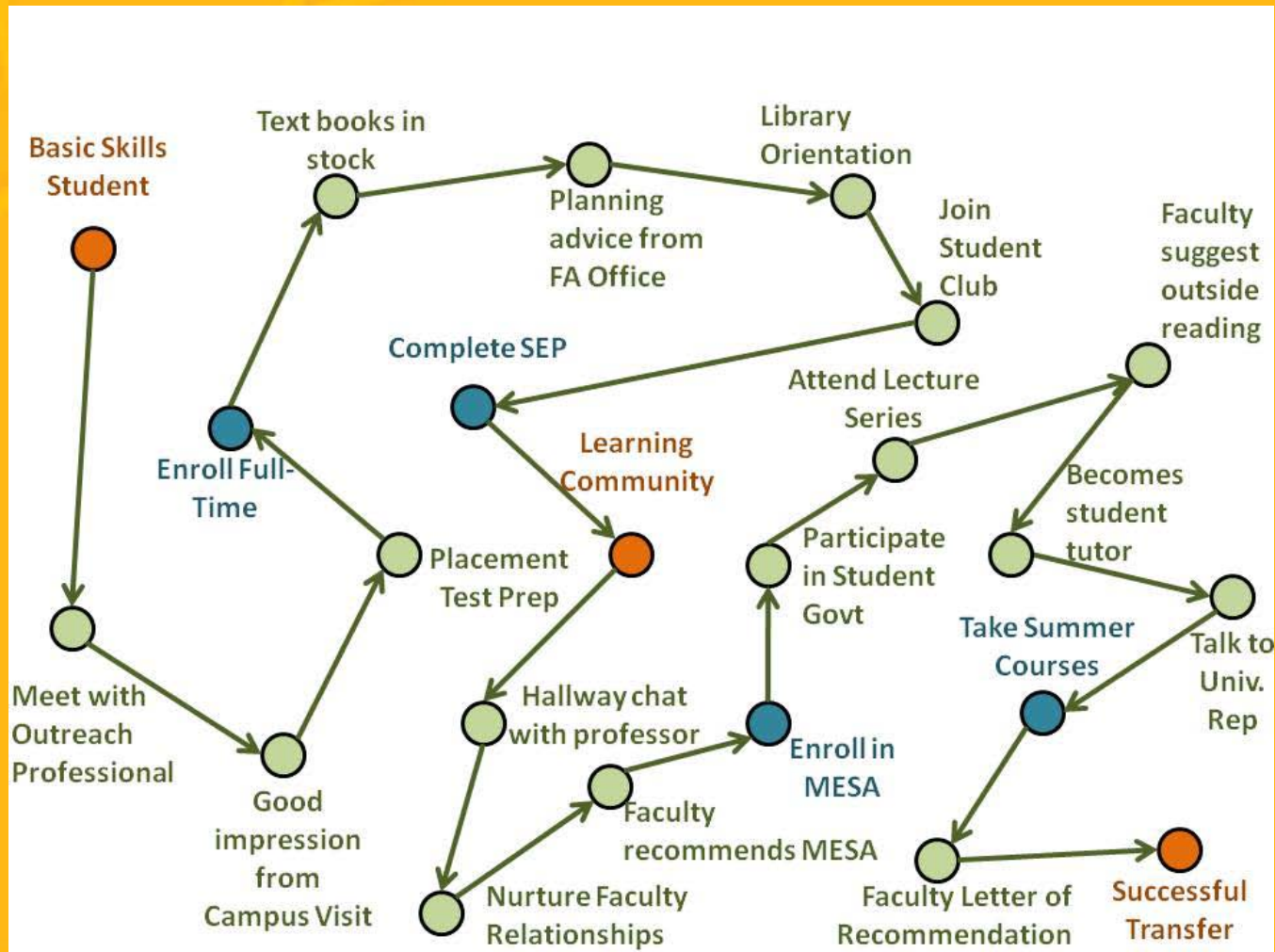
Students Progress in a Non-Linear Fashion



Students Progress in a Non-Linear Fashion



Students Progress in a Non-Linear Fashion



1

BSOC Recommendations

Research should be brought to the intervention level, at the classroom.

2

BSOC Recommendations

- Research **offices should receive support** that will enable them to address multiple domains of **research capacity**.
- **Technical assistance** should be provided to colleges that will help them to strengthen **cultures of evidence and inquiry**.



The Bridging Research, Information, and Culture (BRIC) Initiative

The Bridging Research, Information, and Culture Initiative

The BRIC Initiative

Developing a Better Understanding of How to Close the Performance Gap

(Poor Planning)

Standard Level
of Organizational
Awareness



(Good Planning)

Elevated Level of
Organizational
Awareness



(Good Performance)

Improved
Processes &
Performance



Knowledge Gap



Performance Gap

**Strategic Planning
Function**

**Institutional Effectiveness &
Student Success Function**

Institutional Outcomes and Benchmarks

Classroom and Service Area Assessment

The Three Elements of BRIC

1. Streamline the Work of Institutional Researchers

- Encourages more practitioner-level work, consulting and engaging in conversations about student success.

The Three Elements of BRIC

2. Professional Development to Varied Practitioners

- Promote the culture of inquiry among practitioners via training, facilitating, and data coaching.

The Three Elements of BRIC

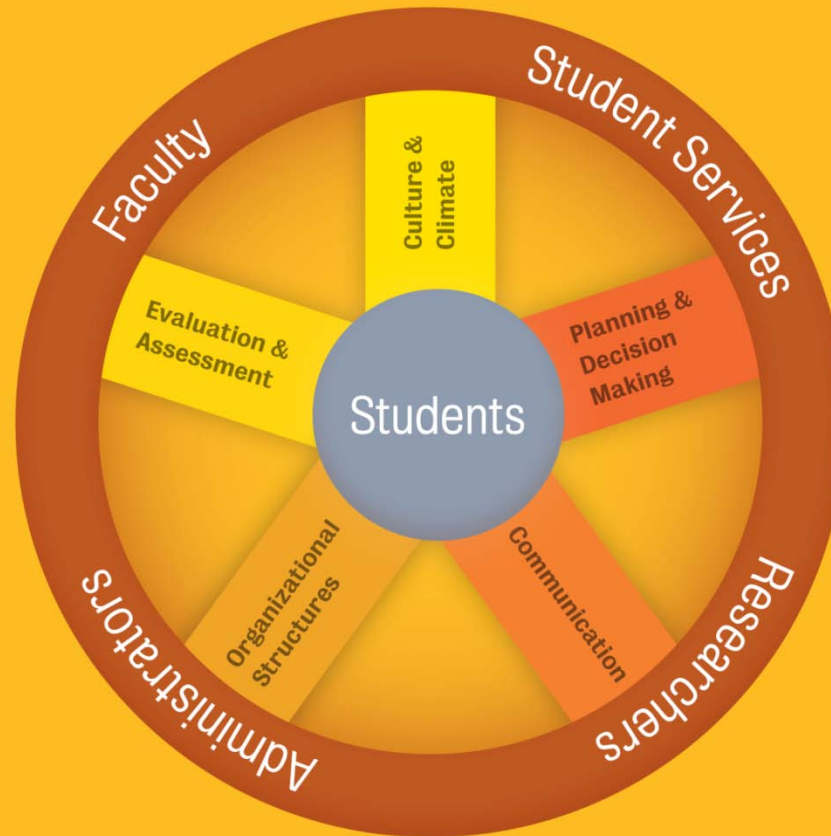
3. Technical Assistance Program (TAP)

- Tailored technical assistance for 15 community colleges to strengthen their cultures of inquiry.

TAP Expected Outcomes

1. Developing Actionable Data
2. Interpreting Data through Discussion
3. Facilitating Dialogue
4. Integrating Data into Institutional Processes
5. Building an Inquiry-Based Practice

BRIC TAP Framework



TAP Participant Benefits



BRIC TAP Guiding Principles

1. Focus on Student Learning & Success
2. RESPECT!
3. Facilitate, Don't Dictate
4. Guide Discussions
5. Practice Reflective Listening
6. Be Flexible and Fluid
7. Encourage Widespread Engagement
8. Share the Vision
9. Be Fearless About Change
10. KISS - Keep it Simple & Supportive

Inquiry Guides

CORE:

- Assessing Student Learning **Outcomes**
- Using an **Equity** Lens to Assess Student Learning
- Assessing Strategic Intervention Points in Student **Services**

SUPPORT:

- A Model for Building Information **Capacity** and Promoting a Culture of Inquiry
- Assessing Institutional **Effectiveness**
- Assessing **Basic Skills** Outcomes
- Maximizing the Instructional and Student Services **Program Review**
- Turning Data into Meaningful **Action**

Non-TAP Schools

- Inquiry Guides
- Regional Meetings
- Research Concierge
- Dynamic RP Group Website
- Conference Presentations

Closing Dialog

**What would help deepen
the culture of inquiry at
your institution?**

Contact & Information

RP Group Website

www.rpgroup.org

BSOC/BRIC Project Contacts

Robert Johnstone, Project Director
johnstoner@smccd.edu

Priyadarshini Chaplot, Project Coordinator
pchaplot@rpgroup.org